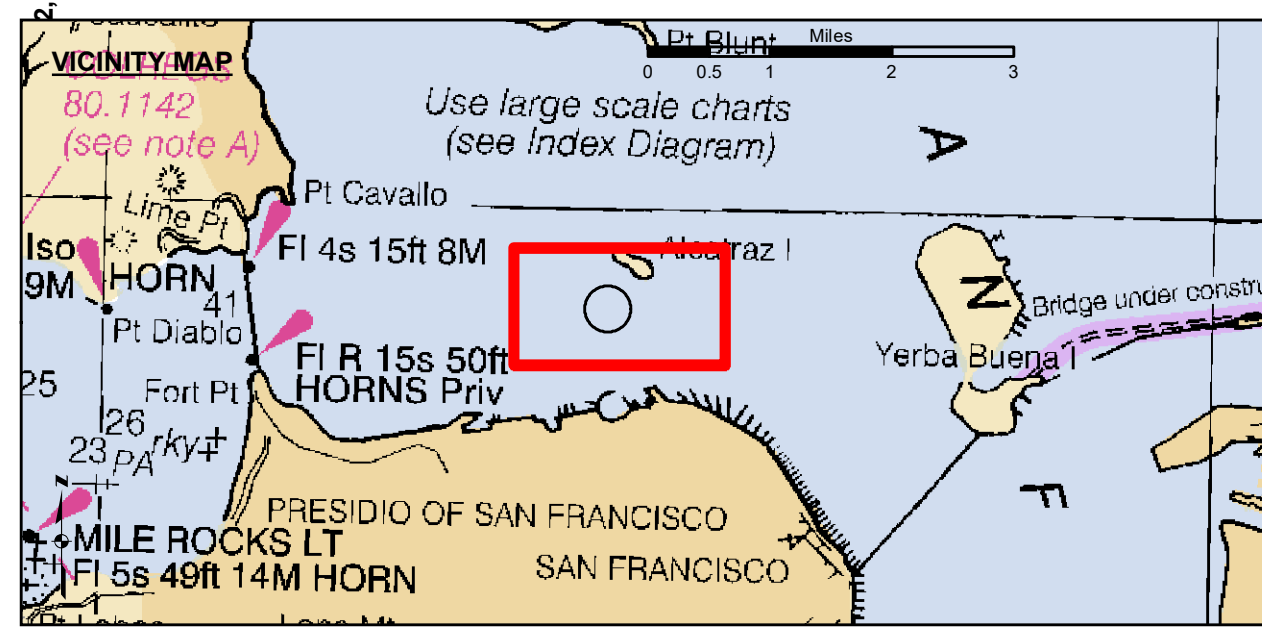
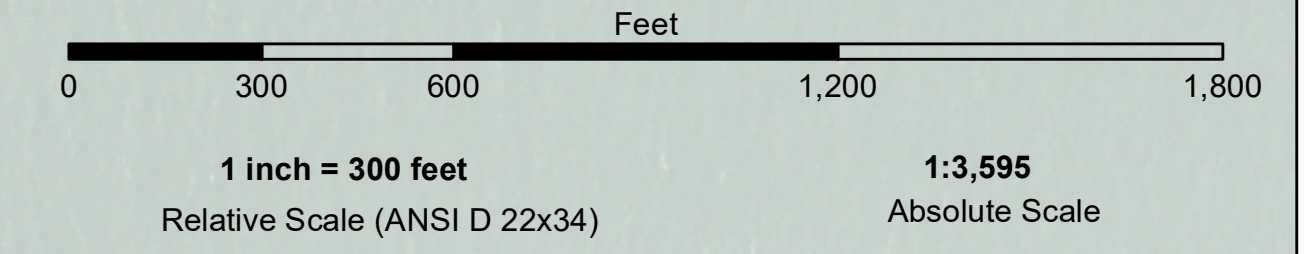


LAMBERT COORDINATES		
POINT	X	Y
U.S.G.S. MON, 57 ELEV. - 14.00	6,005,367	2,123,290
TRANSAMERICA BUILDING	6,011,912	2,117,586
ALCATRAZ DISPOSAL SITE - (SF-11)		
1,000 FT. RADIUS	6,005,935	2,127,235
ALCATRAZ LIGHT	6,006,552	2,129,010
ALCATRAZ BUOY	6,006,367	2,127,186



- Federal Navigation Channel
- Shoaling Area
- Placement Area
- Anchorage Area
- Wreck Area
- Submerged Wreck
- Zone\_III\_Angle\_Points
- Beacon, General
- Obstruction Point
- Navigation Buoy
- Navigation Buoy
- Shoalest Sounding\*
- Contour Lines
- Every 10'
- 20' to -120'

NOTES:  
 HORIZONTAL COORDINATE SYSTEM:  
 NORTH AMERICAN DATUM OF 1983 (NAD83), PROJECTED TO THE STATE PLANE COORDINATE SYSTEM (SPCS), CALIFORNIA ZONE III. DISTANCE UNITS IN U.S. SURVEY FEET.  
 VERTICAL DATUM:  
 SOUNDINGS ARE SHOWN IN FEET AND INDICATE DEPTHS BELOW MEAN LOWER LOW WATER.  
 SURVEYED BY THE CORPS OF ENGINEERS.  
 THE PROJECT DEPTH IS -40 FEET AT MLLW.  
 PLANE GRID AND COORDINATES ARE BASED ON LAMBERT PROJECTION, NAD 83, ZONE III CALIFORNIA AS DESCRIBED IN SPECIAL PUBLICATION NO. 235, PUBLISHED BY THE NATIONAL OCEAN SURVEY.  
 HORIZONTAL GPS CONTROL:  
 COAST GUARD D-BEACON  
 BENCHMARK: 180 1936  
 PID: HT0702  
 MLLW = 3.972m(13.03ft)  
 NOAA STATION 9414290  
 TIDE GAUGE LOCATION: SAN FRANCISCO

DRAWING NOT TO BE USED FOR NAVIGATION. ONLY CHANNEL CONDITION AT DATE OF SURVEY. THE LOCATION OF ALL NAVIGATION AIDS ARE BASED ON INFORMATION PROVIDED BY THE U.S. COAST GUARD. BUOY LOCATIONS REPRESENT THE POSITION OF THE SINKER ONLY. SOUNDINGS WERE TAKEN BY FATHOMETER AND ARE SHOWN TO THE NEAREST TENTH OF A FOOT. SOUNDINGS ARE BASED ON THE DATUM OF MEAN LOWER LOW WATER AT THE LOCALITY.  
 SURVEYED BY THE CORPS OF ENGINEERS.  
 THE PROJECT DEPTH IS -40 FEET AT MLLW.  
 PLANE GRID AND COORDINATES ARE BASED ON LAMBERT PROJECTION, NAD 83, ZONE III CALIFORNIA AS DESCRIBED IN SPECIAL PUBLICATION NO. 235, PUBLISHED BY THE NATIONAL OCEAN SURVEY.  
 HORIZONTAL GPS CONTROL:  
 COAST GUARD D-BEACON  
 BENCHMARK: 180 1936  
 PID: HT0702  
 MLLW = 3.972m(13.03ft)  
 NOAA STATION 9414290  
 TIDE GAUGE LOCATION: SAN FRANCISCO

**US Army Corps of Engineers**  
 San Francisco District  
 1455 Market Street  
 San Francisco, CA 94103

**DISCLAIMER:** The United States Government furnishes this information as a service to the public. It is not intended to be used for any purpose other than that for which it was prepared. The user assumes all liability for any use of this information. The United States Government makes no warranty, expressed or implied, concerning the accuracy, completeness, or timeliness of the information. The user is responsible for the results of any use of this information. The user is responsible for the results of any use of this information. The user is responsible for the results of any use of this information.

Chart Date: Jan 06, 2022  
 Designed by: PTD  
 Drawn by: PTD  
 Surveyed by: KEVIN P. ARNETT  
 Flatted by: PTD  
 Checked by: PTD  
 Approved: Chief, Construction Branch

**CALIFORNIA**  
 SAN PABLO BAY  
 ALCATRAZ DISPOSAL SITE-SF11  
 CONDITION SURVEY  
 04 JANUARY 2021

**Sheet Reference Number 1 of 1**